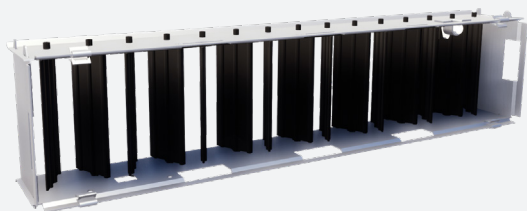


GT007

OPPOSED BLADE DAMPER



VARIANTS

GT007

Opposed blade damper for mounting on square grilles. Air flow rate is adjustable by means of a screw driver.

Operated by means of a screw driver.
Grille mounting by means of S-clips
(supplied with each damper).

TECHNICAL INFORMATION

APPLICATION	Airflow type	Exhaust or supply
CONSTRUCTION	Shape	Rectangular
	Min. length	100mm
	Max. length	625mm
	Available steps in length	25mm
	Min. height	75mm
	Max. height	600mm
	Available steps in height	25mm
MATERIAL	Standard material	Blades: black powder coated sheet steel RAL9005 Frame: galvanised (275g/m ²) sheet steel
MOUNTING	Mounting options	Mounted on grille by means of S-clips

PRODUCT KEY

OPPOSED BLADE DAMPER GT007

G	T	0	0	7	0	4	0	0	0	2	0	0
---	---	---	---	---	---	---	---	---	---	---	---	---

Nominal length L (mm):
From 100 to 625mm,
per 25mm

Nominal height H (mm):
From 75 to 600mm,
per 25mm

